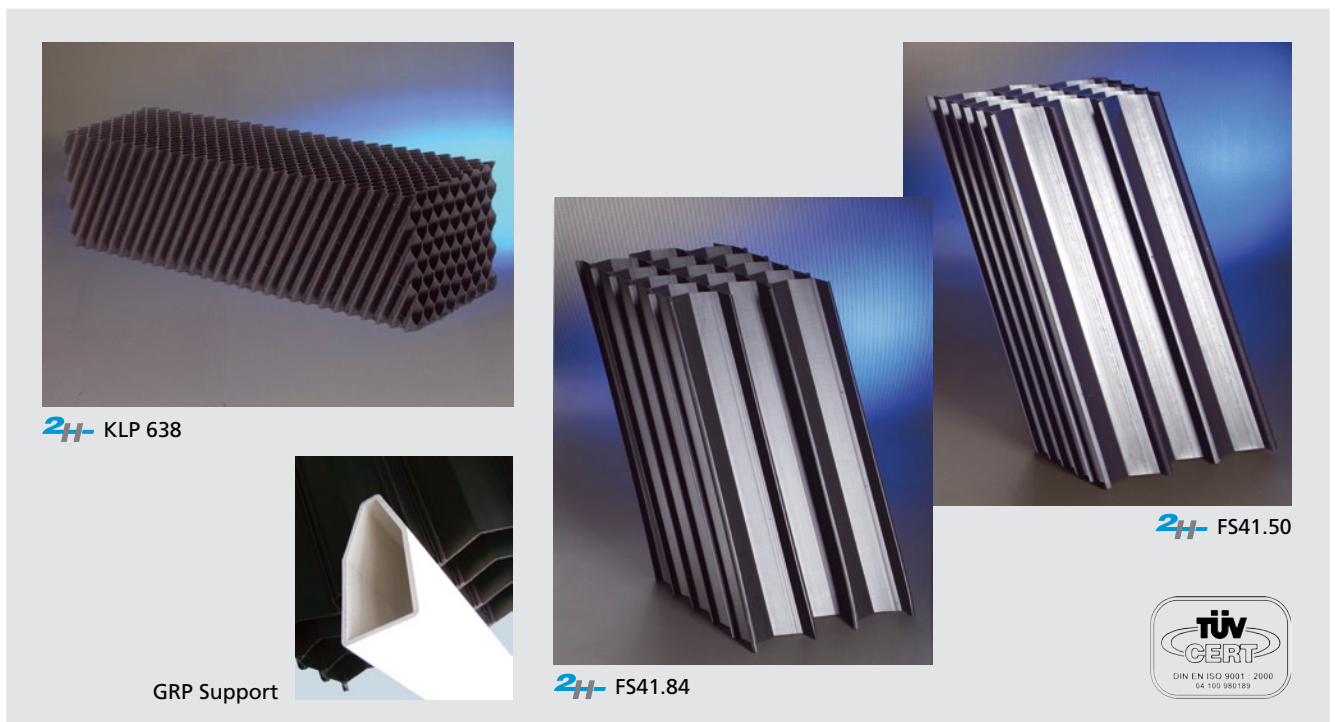


Product Profile


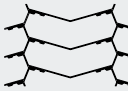
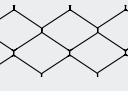
Tube Settlers

TUBEdek®



- ✓ **Process efficiency**
 From multiplication of the sedimentation area, chevron equidistant channel shape and adaptation of the settling area spacing and slope.
- ✓ **Flexible dimensions**
 TUBEdek® can be adapted to all kinds of shapes, inclinations, round settlers and allows cut outs.
- ✓ **Easy handling**
 Simple on site assembly method grants low cost, safe delivery to any place in the world.
- ✓ **Sophisticated support system**
 With stainless steel and specially shaped glass fibre reinforced plastic beams minimizing turbulence and sludge deposit.
- ✓ **Strong and high quality material**
 TUBEdek® provides high stability of the modules for easy maintenance – PP material approved for high standards of potable water applications.

Technical Data

2H Type		FS41.84	FS41.50	KLP 638
				
Sedimentation area	Slope 60° [m²/m³]	6.25	11	15
	Slope 55° [m²/m³]	7	13	-
Vertical module height [mm]		700 - 2000	500 - 2000	600
Standard module height [mm]		1000 / 1500	1000	610
Lamella pitch [mm]		83 (+/-1)	45 (+/-1)	33 (average)
Hydraulic radius [cm]		2.6	1.5	1.7
Material		PVC / PPTV	PVC / PPTV	PPTV
Max. operation temperature	[°C/PVC]	55	55	-
	[°C/PPTV]	80	80	80
Weight	[kg/m³]	35 (PPTV)	53 (PPTV)	20 - 50
	(dry) [kg/m³]	45 (PVC)	80 (PVC)	(different sheet thickness)

Typical Applications

Potable and process water	<ul style="list-style-type: none"> • Filter backwash water 	<ul style="list-style-type: none"> • Surface water • Groundwater • Filter backwash water 	<ul style="list-style-type: none"> • Low solids load polishing
Waste Water	<ul style="list-style-type: none"> • Primary sedimentation • Stormwater • Activated sludge with low sludge volumes • Humus tanks behind fixed film processes 	<ul style="list-style-type: none"> • Aqua culture • Humus tanks behind fixed film processes • Flocculated water • Stormwater 	<ul style="list-style-type: none"> • Aqua culture • Polishing

General Remarks

PVC-material:	UV stabilized, highest surface finish
PP-material:	UV stabilized, certified for potable water application
Sedimentation area:	Defined as horizontal projection of the TUBEdek® surface per m³. To be multiplied by H to get the sedimentation area per m² of footprint area.
Round cuts:	For circular tanks maximum available height ex works is H = 1300 mm for Germany and 1000 mm for UK.
Anti flotation restraints:	Tube settlers made of talcum reinforced Polypropylene (PPTV) must have restraints against flotation, available from GEA 2H Water Technologies.
Load to supports:	When designing the supports the operational load has to be added to the product weight. (Recommendation: min. 50 kg/m³, for waste water up to 200 kg/m³)
Support:	For the equipment of large tanks, GEA 2H can supply special GRP supports for optimized module dimensions and support layouts.
Shape KLP:	Standard module end is cut vertically.
Max. tolerances:	On all dimensions +/- 20 mm or 2 %, whichever is the greater. Tighter tolerances by prior agreement.

This information has been put together with greatest care. However, any performance data given in this leaflet is subject to compliance with certain surrounding conditions and hence may vary from case to case. Further, we reserve the right to make changes at any time without notice. We strongly recommend (i) reconfirmation with GEA 2H whether this information is still fully valid, before using it for final designs and (ii) to verify performance data taking into account the actual surrounding conditions. GEA 2H takes no responsibility for any consequences due to non-compliance with these recommendations.



GEA 2H Water Technologies Ltd

Sketty Close
 Brackmills Industrial Estate
 Northampton NN4 7PL
 Tel: +44 (0) 845 0039 114 · Fax: +44 (0) 845 0039 115
 www.gea-2h.co.uk · sales.2h.uk@geagroup.com